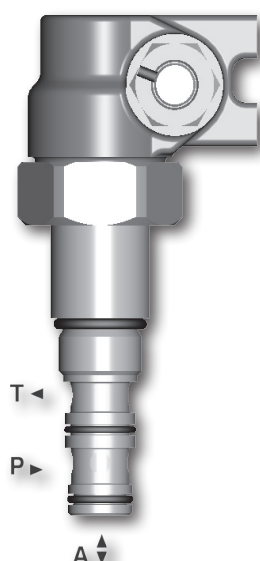


# Proportional Pressure Reducing - Relieving Valve, Manually Operated

**PVRR1-063**

M20x1.5 • Qmax 20 l/min (5 GPM) • pmax 30 bar (435 PSI)



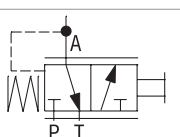
## Technical Features

- › Excellent stability throughout flow range with the rapid response to manually adjusted spool position and to dynamic operating pressure changes
- › Low hysteresis, accurate pressure control and low pressure drop
- › Integrated relief function for protection against pressure peaks
- › In the basic position of actuator the output channel A is relieved by connecting to the tank
- › Pressure range up to 10 bar
- › Hardened precision parts
- › In the standard version, the valve is zinc-coated for 240 h protection acc. to ISO 9227

## Functional Description

A mechanically direct-operated, spool-type pressure reducing-relieving valve in the form of a screw-in cartridge. Reduced pressure is proportional to manually adjusted stroke of the actuating system. This valve is intended for use as a pressure limiting device. Note: Consult factory for special OEM versions of this product.

Symbol



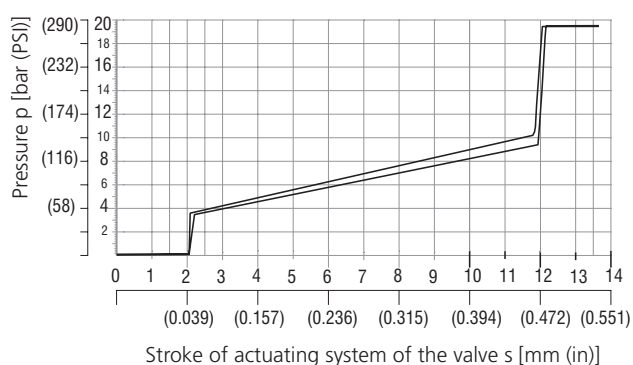
## Technical Data

Valve size / Cartridge cavity		M20x1.5 / QE3
Max. pressure (port P)	bar (PSI)	30 (435)
Min. reduced pressure	bar (PSI)	3.5 (51)
Max. reduced pressure	bar (PSI)	10 (145)
Max. flow rate P-A	l/min (GPM)	20 (5.3)
Fluid temperature range (NBR)	°C (°F)	-30 ... +100 (-22 ... +212)
Fluid temperature range (Viton)	°C (°F)	-20 ... +120 (-4 ... +248)
Mass	kg (lbs)	0.328 (0.723)

	Data sheet	Type
General information	GI_0060	Products and operating conditions
Cavity details	SMT_0019	SMT-QE3*
Spare parts	SP_8010	

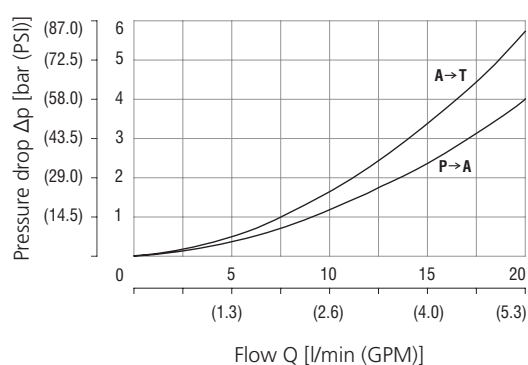
## Characteristics measured at $v = 32 \text{ mm}^2/\text{s}$ (156 SUS)

### Reduced pressure related to stroke of actuating system

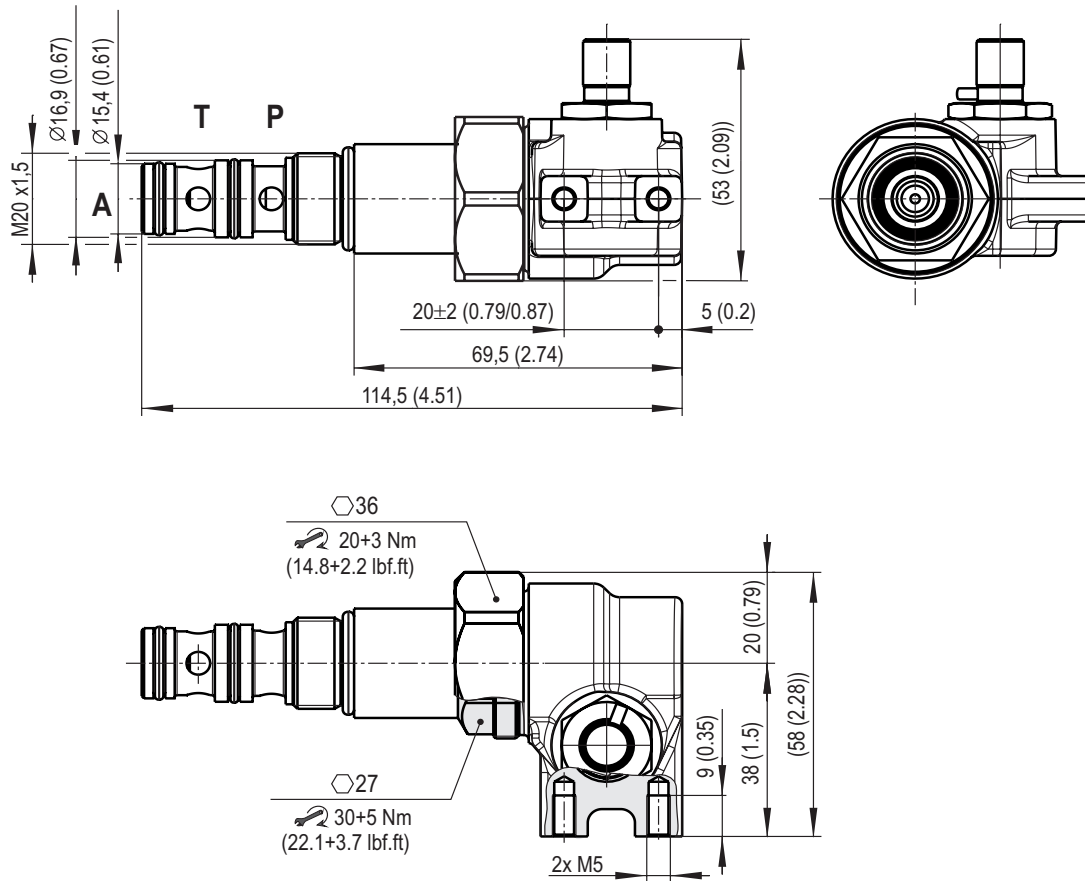


### Pressure drop related to flow rate

A-T, relieving function  
P-A, reducing function



Dimensions in millimeters (inches)



Ordering Code

PVRR1 - 063 / S - <input type="text"/> - 1 <input type="text"/> - A					
Proportional Pressure Reducing - Relieving Valve, Manually Operated					Surface treatment zinc-coated (ZnCr-3), ISO 9227 (240 h)
Valve cavity M20x1.5 / QE3					
Model screw-in cartridge				No designation V	Seals NBR FPM (Viton)
Range of regulated pressure 3.5 - 10 bar (51 - 145 PSI)	3,5/10				Actuator shaft with spring pin