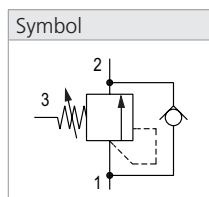
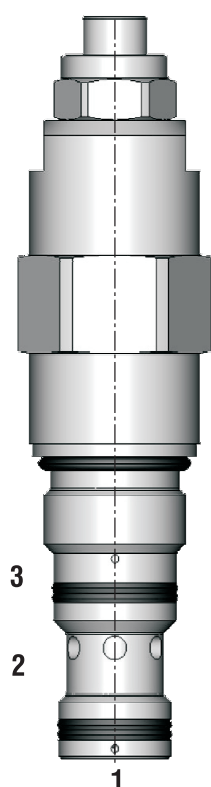


Pressure Sequence Valve, Poppet Type, Direct Acting, External Drain

SS3A-BP3

7/8-14 UNF • Q_{max} 40 l/min (11 GPM) • p_{max} 420 bar (6100 PSI)



Technical Features

- › Valve enables motion sequence of hydraulic actuators
- › Pressure relief function protecting the actuator against overloading and pressure peaks
- › Integrated check valve acting as an anti-cavitation valve and by-pass valve
- › Spring chamber is connected to external drainage (port 3)
- › No influence of back pressure in port 2 on cracking pressure
- › Setting can be performed during machine operation = leak free closing of adjustable element
- › Wide range of relief pressure setting up to 420 bar (6100 PSI)
- › In the standard version, the valve is zinc-coated for 520 h protection acc. to ISO 9227

Functional Description

A poppet type, direct acting, pressure sequence valve providing ordered sequencing of hydraulic actuators and pressure limiting function. The spring acts on the poppet and presses it into the valve seat. If the hydraulic pressure is below the pre-set value, the valve is closed. If the hydraulic force exceeds the pre-set value, the valve opens and flow passes from port 1 to port 2 until the system pressure falls below the spring pre-set value and the valve closes again. Back pressure at port 2 has no influence on cracking pressure. The built-in check valve allows flow from port 2 to port 1.

Note:

For proper function, port 3 must be without a pressure.

Pressure in port 3 automatically increases the set cracking pressure of the valve in a ratio of 1:1.

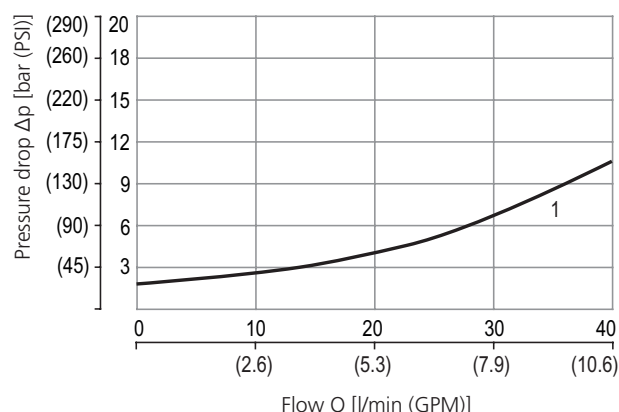
Technical Data

Valve size / Cartridge cavity		7/8-14 UNF-2A / BP3 (C-10-3S)		
Max. flow	l/min (GPM)	40 (10.6)		
Relief pressure range		21	32	42
Max. relief pressure	bar (PSI)	210 (3050)	320 (4640)	420 (6090)
Fluid temperature range (NBR)	°C (°F)	-30... +100 (-22... +212)		
Fluid temperature range (FPM)	°C (°F)	-20... +120 (-4... +248)		
Leakage	ml/min	0,3 (5 drops per min)		
Weight	kg (lbs)	0,29 (0.64)		

		Datasheet	Type
General information		GI_0060	Products and operating conditions
Valve bodies	In-line mounted	SB_0018	SB-BP3*
	Sandwich mounted	SB-04(06)_0028	SB-BP3*
Cavity details		SMT_0019	SMT-BP3*
Spare parts		SP_8010	

Characteristics measured at $v = 40 \text{ mm}^2/\text{s}$ (195 SUS)

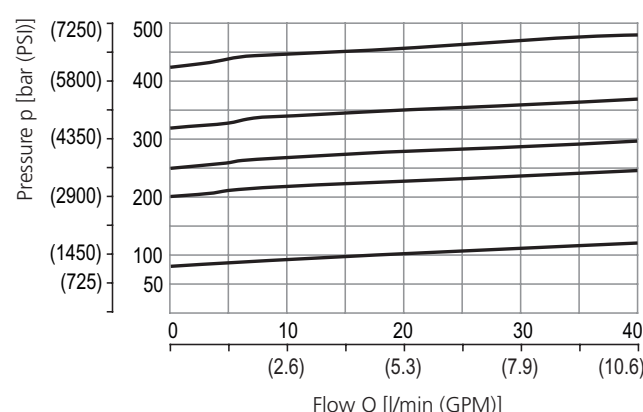
Pressure drop related to flow rate



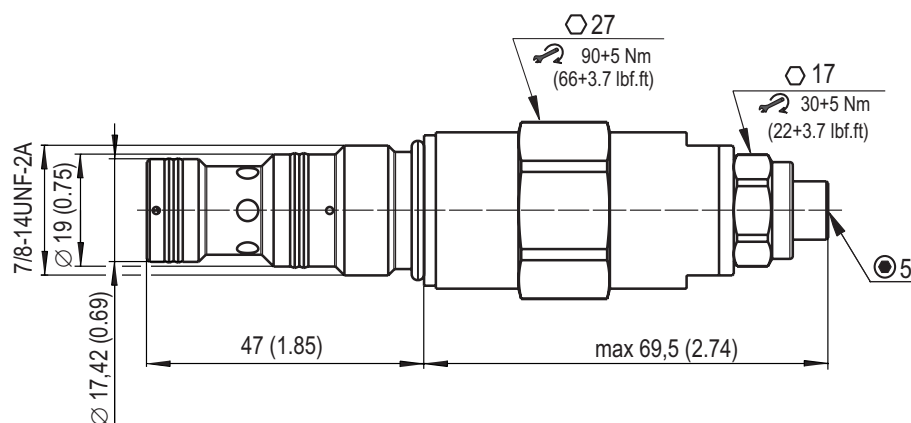
Flow	
1	free flow (2→1)

Cracking pressure related to flow rate

Pressure range 32



Dimensions in millimeters (inches)



Ordering Code

SS3A - BP3 / H **S** **- B**

Pressure sequence valve, poppet type, direct acting, external drain

Valve cavity
7/8-14 UNF (C-10-3S)

Model
High performance

Relief pressure range
70 - 210 bar (1020 - 3050 PSI)
106 - 320 bar (1540 - 4640 PSI)
140 - 420 bar (2030 - 6090 PSI)

21
32
42

Surface treatment
zinc-coated (ZnNi), ISO 9227 (520 h)

No designation
V

Seals
NBR
FPM (Viton)

Adjustment option
allen head (Hex. 5) without protective cap